

KING EDWARD VII SCHOOL



Dress Code (Students)

Date: September 2025

Approved: GB

Leadership Team Responsibility: RG

King Edward VII School Dress Core – Guidance for Students

Introduction

At King Edward VII School, we have no School uniform and we do not generally restrict students' choice of clothes. However, smart, clean, comfortable and practical dress is expected and students and parents are advised that clothing should always be suitable for the workplace.

Health and Safety

School is a place of work and education, and safety is paramount. Students should ensure that they are dressed sensibly and in a way that won't increase risk of injury to themselves or others.

Shoes worn should take into account the large site, amount of walking needed and the large number of stairs in School. Additionally, sandals and open shoes such as 'sliders' and 'Crocs' are inappropriate for practical lessons such as Science and Technology subjects when working in a laboratory or workshop, and Physical Education. It is therefore important that students are aware of when they will have these lessons and ensure that they are dressed accordingly, or they will be asked to change or may not be able to participate in practical activities.

Many subjects have a manual or practical element so clothing should be safe for all activities, for example, wearing flammable fabrics or clothing that could get caught in equipment is not advised. Please note also that, for health and safety reasons, fingernails must be kept short at all times.

Health and Safety in Physical Education

For Physical Education it is essential for all students to change into PE kit and appropriate footwear.

Permitted clothing:

- King Edward VII School PE T Shirt
- King Edward VII PE sweatshirt/zip top
- Black shorts or black jogging bottoms
- Suitable footwear for the timetabled activity (trainers/football boots/astro turf boots)

Students will not be permitted to wear open footwear such as sandals, sliders or 'Crocs' for taking part in Physical Education. The Physical Education department publishes a guide to appropriate sportswear and helps students obtain the necessary clothing. For health and safety reasons, **all** jewellery must be removed for PE lessons, without exception. This includes body piercings.

The wearing of jewellery, earrings and studs (of any material) is also not permitted during other sporting or physical activities such as out-of-hours

clubs or competitive fixtures. This includes body piercings such as tongue studs and belly button jewellery.

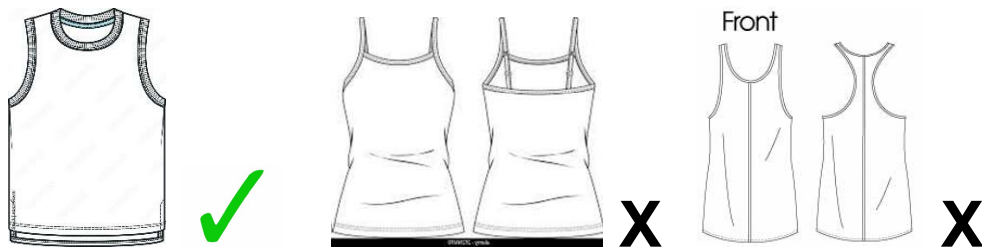
The items above represent a potential hazard not only to the wearer but also to other participants. Medical advice confirms that any jewellery worn in Physical Education lessons is an unnecessary risk. Serious accidents have occurred as a result of contact between students wearing piercings.

New piercings can take up to six weeks before sleepers and studs can be removed and cartilage piercings longer still. Parental support, in ensuring that piercing takes place at the start of the summer holidays to allow sufficient time for safe removal, is appreciated. With cartilage piercing particularly, this is essential as these can take longer to heal. Please ensure that you obtain a stamped/branded record (or copy of this) from the piercer, with the date of piercing and date for safe removal.

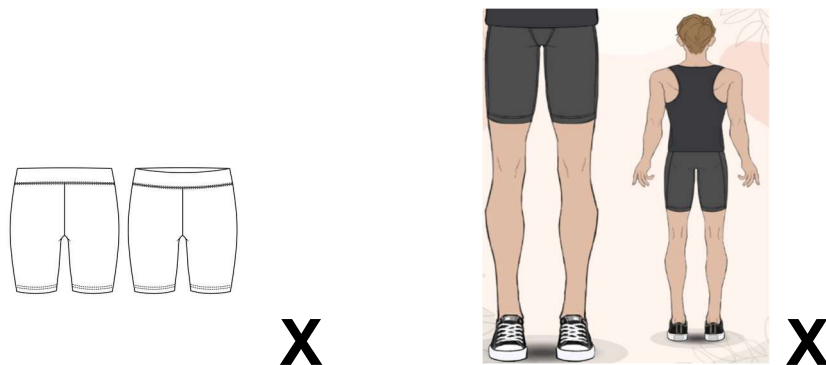
Further guidance

The following are not permitted to be worn in School:

- Very low-cut or low-slung jeans, skirts, shorts and trousers which expose the midriff and/or underwear
- Cropped or low-cut tops
- Tops that do not cover the majority of students' shoulders (straps less than two fingers' width)



- Transparent clothing
- Clothing that is so tight fitting that underwear is visible underneath it. This includes any tight-fitting 'cycling' shorts



- Very short shorts and skirts. Skirts, shorts and skorts must extend beyond the student's fingertips when arms are extended at their sides



- Cut-out/ripped clothing that exposes underwear or skin beneath
- Clothes with graffiti or logos which may give offence
- Caps, hats and hoods indoors (students must be identifiable at all times)
- Any clothing specific to prayer and worship of any faith. In order to safeguard staff, students and other stakeholders, and for staff to be able to teach and communicate effectively, the niqab or any other face covering should not be worn anywhere on the School premises.

The School's response

On occasion, we may need to advise individual students that their choice of clothing is not suitable. Students who wear inappropriate clothing will be asked to change what they wear for the following day and will be issued with one behavior point for "Dress Code". This is not up for debate and the decision as to what is or is not appropriate rests with the member of staff and must not be challenged. In cases where it is deemed unacceptable to allow the student to continue to wear the item, students will be issued with a plain T-shirt and/or jogging bottoms to be worn for the remainder of the day. These items of clothing remain the property of the School and must be returned in a clean condition. Staff may request a deposit to ensure the safe return of the item/s. Where students persist in wearing inappropriate clothes, the School will make contact with parents, as we have to consider this as a refusal to co-operate with a reasonable request. Further concerns will result in a further sanction, in line with the School's Consistent Conduct Policy.

To summarise our approach, we expect and require students to dress in a sensible and practical manner suitable for a place of work and to continue to show the mature and co-operative attitude to this issue which has worked so well over many years. We look forward to continuing parental support for our approach to this.